

The Login Screen

We will begin using the Web Module by logging in. Each web user should be given their own unique User Id and Password. Enter the User Id and Password in the spaces provided as shown in Fig. 1-1. Then either click on or use the <ENTER> Key to log on.



The screenshot shows the login interface for Total Recall Records Management Software. At the top left is the logo with the letters 'TR' in a red circle, followed by the text 'TOTAL RECALL™ Records Management Software'. At the top right is a small photograph of two people in an office setting. The main content area is titled 'Security Control Form' and 'Please Log-In'. It contains two input fields: 'User ID' and 'Password'. Below these fields are two buttons: 'Log In' and 'Clear'. At the bottom of the form, there is a copyright notice: 'DHS Worldwide Software Solutions ©2002 All Rights Reserved SQL Version 4.1.574.1.Y'.

Fig. 1- 1

If an incorrect Login or Password is entered then the screen shown in Fig.1- 2 will open. If this occurs simply re-enter the correct Information.



This screenshot shows the same login interface as Fig. 1-1, but with an error message. The text 'User ID or Password Invalid!' is displayed in red above the 'Please Log-In' heading. The 'User ID' and 'Password' input fields and the 'Log In' and 'Clear' buttons are still present and visible.

Fig. 1- 2

The Main Screen

Once Logged in the first screen shown will be the **Home Page** as shown in Fig 1- 3.

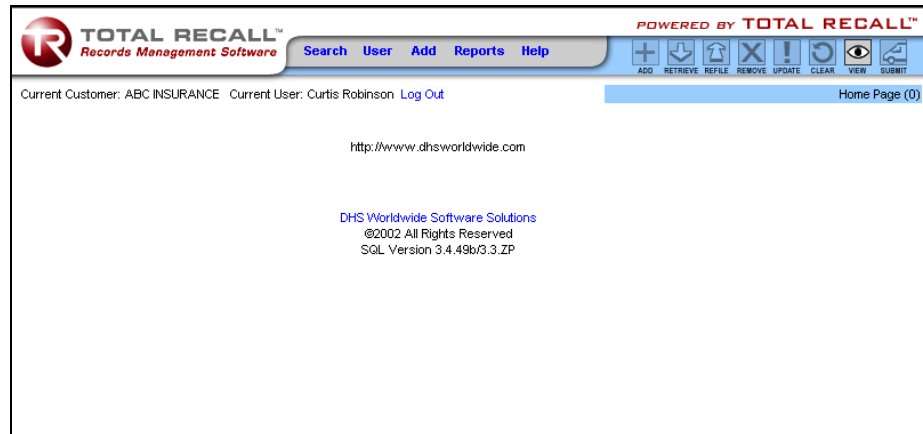


Fig. 1- 3

Parts Of the Home Page

The Home page is divided into several sections described below.

The Menu Section



Fig. 1- 4

The Menu section has the drop down menus that will be used to Navigate the web module and select the user areas.

The Action Section



Fig. 1- 5

The Action Section contains the actions that will be performed from within each Menu Selection.